



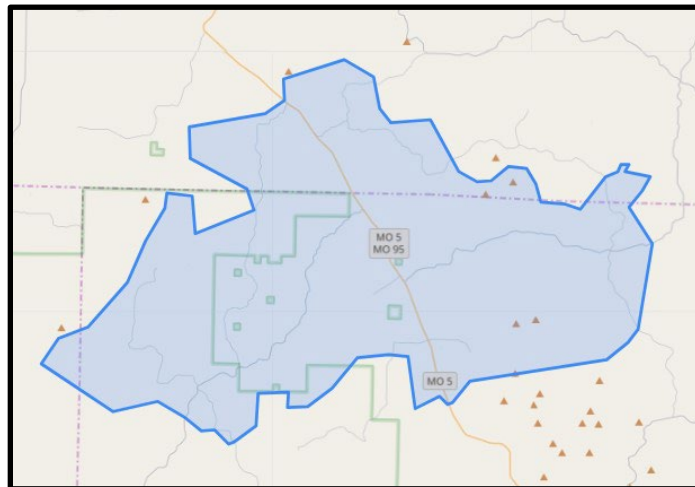
White River Connect News Release

Contact:

Jamie Dopp, Manager of Marketing and Communications
O: (417) 335-9216, C: (417) 425-8739
jdopp@whiteriver.org

NEWS RELEASE

White River Connect is now signing up customers in Wasola, Thornfield, and Squires, MO



Branson, Missouri—White River Connect, a subsidiary of White River Valley Electric Cooperative, will soon be connecting the residents and businesses in Wasola, Thornfield, and Squires, Missouri to high-speed fiber internet. Interested neighbors can now sign up for one of White River Connect's three internet packages, which include up to 1 gigabit speeds.

"Bringing high-speed fiber internet to rural communities such as Wasola, Thornfield, and beyond, is more than just an infrastructure upgrade—it's an investment in opportunity," said White River Connect CEO Beau Jackson. "We're proud to bridge the digital divide and provide our neighbors with the speed, reliability, and connectivity they deserve."

Construction began on White River Connect's fiber network in June of 2023 with its first customer receiving internet service at their home in April 2024. The project, which will provide internet to rural areas of Christian, Douglas, Ozark, Stone, and Taney Counties was estimated to take four years to complete and will cover over 4,200 miles of fiber. White River Connect's high-speed internet is currently available in the areas of Branson, Bear Creek, Sweden, Rockaway, Gretna, and Goodhope, Compton Ridge, Taneyville, Protem, Theodosia, and more with plans to open more markets in 2025.

Residents can visit <https://www.whiteriverconnect.com> to view the map of service availability and sign up for service in those areas. People can also pre-register for areas coming soon.

For more information about White River Valley Electric Cooperative's fiber-to-the-home project, White River Connect, visit <https://www.whiteriverconnect.com>.

#

About White River Connect

White River Connect, the fiber subsidiary of [White River Valley Electric Cooperative](#), is dedicated to bringing high-speed internet to rural Missouri counties including Ozark, Taney, Stone, Christian and Douglas

About WRVEC

[White River Valley Electric Cooperative](#) is a [Touchstone Energy Cooperative](#) dedicated to ensuring our members receive safe and reliable service in their homes and businesses across five southwest Missouri counties including Ozark, Taney, Stone, Christian and Douglas.