



## White River Connect News Release

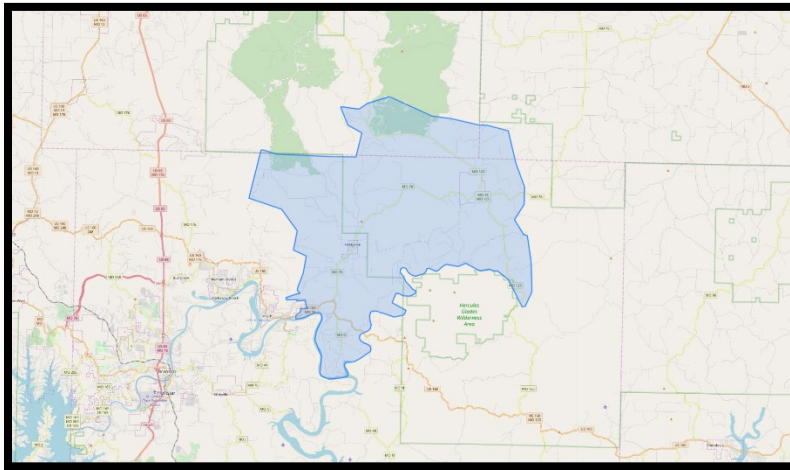
Contact:

Jamie Dopp, Manager of Marketing and Communications  
O: (417) 335-9216, C: (417) 425-8739  
jdopp@whiteriver.org

### NEWS RELEASE

---

## White River Connect now signing up customers in the Taneyville Area



*Branson, Missouri* –White River Connect, a subsidiary of White River Valley Electric Cooperative, is now signing up customers living in the Taneyville area. This includes parts of Bradleyville, Kisseee Mills, and Forsyth.

“Providing high-speed, reliable fiber internet to rural and underserved communities is at the heart of what we do,” said White River Connect CEO Beau Jackson. “We are excited to see how having access to fiber internet improves the lives of our neighbors living in the Taneyville area.”

Construction began on White River Connect's fiber network in June of 2023. The project, which will provide internet to rural areas of Christian, Douglas, Ozark, Stone, and Taney Counties is expected to take four years to complete and will cover over 4,200 miles of fiber. White River Connect's high-speed internet is currently available in the areas of Branson, Bear Creek, Sweden, Rockaway, Gretna, and Goodhope with plans to open more markets in 2025.

Residents can visit <https://www.whiteriverconnect.com> to view the map of service availability and sign up for service in those areas. People can also pre-register for areas coming soon.

For more information about White River Valley Electric Cooperative's fiber-to-the-home project, White River Connect, visit <https://www.whiteriverconnect.com>.

###

**About White River Connect**

White River Connect, the fiber subsidiary of [White River Valley Electric Cooperative](#), is dedicated to bringing high-speed internet to rural Missouri counties including Ozark, Taney, Stone, Christian and Douglas

**About WRVEC**

[White River Valley Electric Cooperative](#) is a [Touchstone Energy Cooperative](#) dedicated to ensuring our members receive safe and reliable service in their homes and businesses across five southwest Missouri counties including Ozark, Taney, Stone, Christian and Douglas.