



## White River Connect News Release

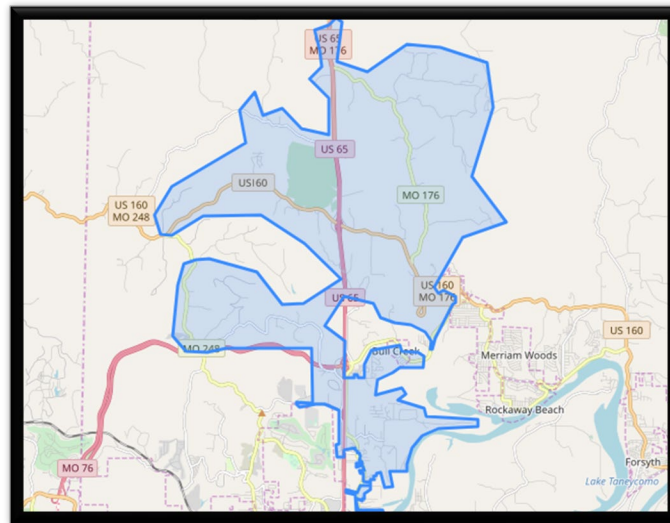
Contact:

Jamie Dopp, Manager of Marketing and Communications  
O: (417) 335-9216, C: (417) 425-8739  
jdopp@whiteriver.org

### NEWS RELEASE

---

## White River Connect is ready to provide high-speed internet to the Bear Creek area



*Branson, Missouri* –White River Connect, a subsidiary of White River Valley Electric Cooperative, is now signing up customers in parts of Bear Creek, Rockaway, Branson, and Walnut Shade, MO with up to gigabit speeds of fiber internet.

“High speed internet is no longer a luxury but a necessity in today’s world,” said White River Connect CEO Beau Jackson. “We’re excited to see how fiber internet being available in rural areas will improve the quality of life of our neighbors.”

Construction began on White River Connect in June of 2023. The project, which will provide internet to rural areas of Christian, Douglas, Ozark, Stone, and Taney Counties. It is expected to take four years to complete and will cover over 4,200 miles of fiber.

Residents can visit <https://www.whiteriverconnect.com> to view the map of service availability and sign up for service in those areas. People can also pre-register for areas coming soon.

For more information about White River Valley Electric Cooperative’s fiber-to-the-home project, White River Connect, visit <https://www.whiteriverconnect.com>.

###

**About White River Connect**

White River Connect, the fiber subsidiary of [White River Valley Electric Cooperative](#), is dedicated to bringing high-speed internet to rural Missouri counties including Ozark, Taney, Stone, Christian and Douglas

**About WRVEC**

[White River Valley Electric Cooperative](#) is a [Touchstone Energy Cooperative](#) dedicated to ensuring our members receive safe and reliable service in their homes and businesses across five southwest Missouri counties including Ozark, Taney, Stone, Christian and Douglas.